

25mg BS CBD Blueberry

Sample ID: 2104KCA0594.1424

Cultivar: N/A

Matrix: Ingestible

Type: Soft Chew

Sample Size:

Received: 04/14/2021

Completed: 04/15/2021

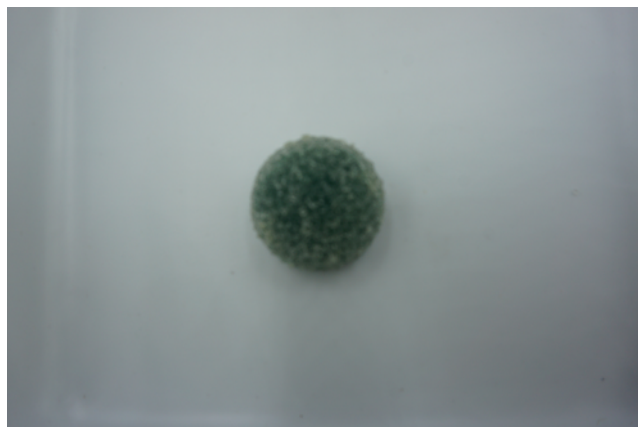
Batch#: 01-1117

Client

Wisdom Essentials, LLC

961 2nd Ave

New York, NY 10022



Summary

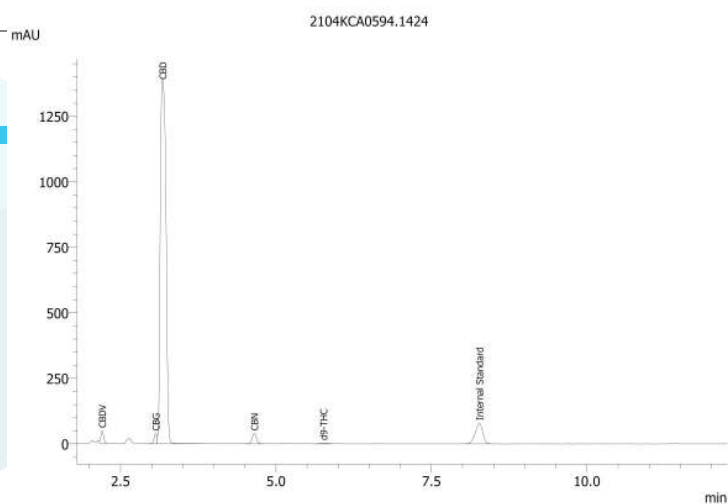
Test	Date Tested	Result
Cannabinoids	04/15/2021	Complete

Cannabinoids by HPLC-PDA

Complete

0.00043%	0.51811%	0.52574%	NT Not Tested	Not Tested
Total THC	Total CBD	Total Cannabinoids	Moisture Content	Foreign Matter

Analyte	LOD %	LOQ %	Result %	Result mg/unit
CBC	0.00009	0.00028	ND	ND
CBCA	0.00018	0.00054	ND	ND
CBCV	0.00006	0.00018	ND	ND
CBD	0.00008	0.00024	0.51811	26.6293
CBDA	0.00004	0.00013	ND	ND
CBDV	0.00006	0.00018	0.00277	0.1424
CBDVA	0.00002	0.00006	ND	ND
CBG	0.00006	0.00017	0.00233	0.1198
CBGA	0.00005	0.00015	ND	ND
CBL	0.00011	0.00033	ND	ND
CBLA	0.00012	0.00037	ND	ND
CBN	0.00006	0.00017	0.00210	0.1079
CBNA	0.00006	0.00018	ND	ND
Δ8-THC	0.00010	0.00031	ND	ND
Δ9-THC	0.00008	0.00023	0.00043	0.0221
THCA	0.00008	0.00025	ND	ND
THCV	0.00007	0.00021	ND	ND
THCVa	0.00006	0.00019	ND	ND
Total THC		0.00043	0.02210	
Total CBD		0.51811	26.62930	
Total		0.52574	27.0215	



Total THC = THCA * 0.877 + Δ9-THC

Total CBD = CBDA * 0.877 + CBD

LOD = Limit of Detection

LOQ = Limit of Quantitation

ND = None Detected

For plant material, the reported result is based on a sample weight with the applicable moisture content for that sample.



Wes Rogers

Wes Rogers
Principal Scientist
04/15/2021



ISO/IEC 17025:2017 Accredited
Accreditation #108651

This product or substance has been tested by KCA Laboratories using validated testing methodologies and a quality system. Values reported relate only to the product or substance tested. KCA Laboratories makes no claims as to the efficacy, safety or other risks associated with any detected or non-detected amounts of any substances reported herein. This Certificate of Analysis shall not be reproduced except in full, without the written approval of KCA Laboratories.